



## KELOWNA POPULATION STATISTICS

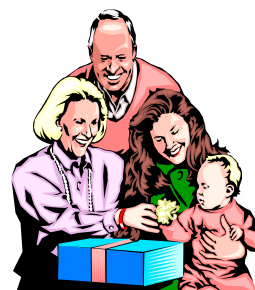
*Prepared by: Planning and Corporate Services Department*

**Note:** *The data presented here summarizes the major results of the 2001 Canada Census, carried out nation wide in May 2001.*

### POPULATION BY AGE AND GENDER, City of Kelowna 2001

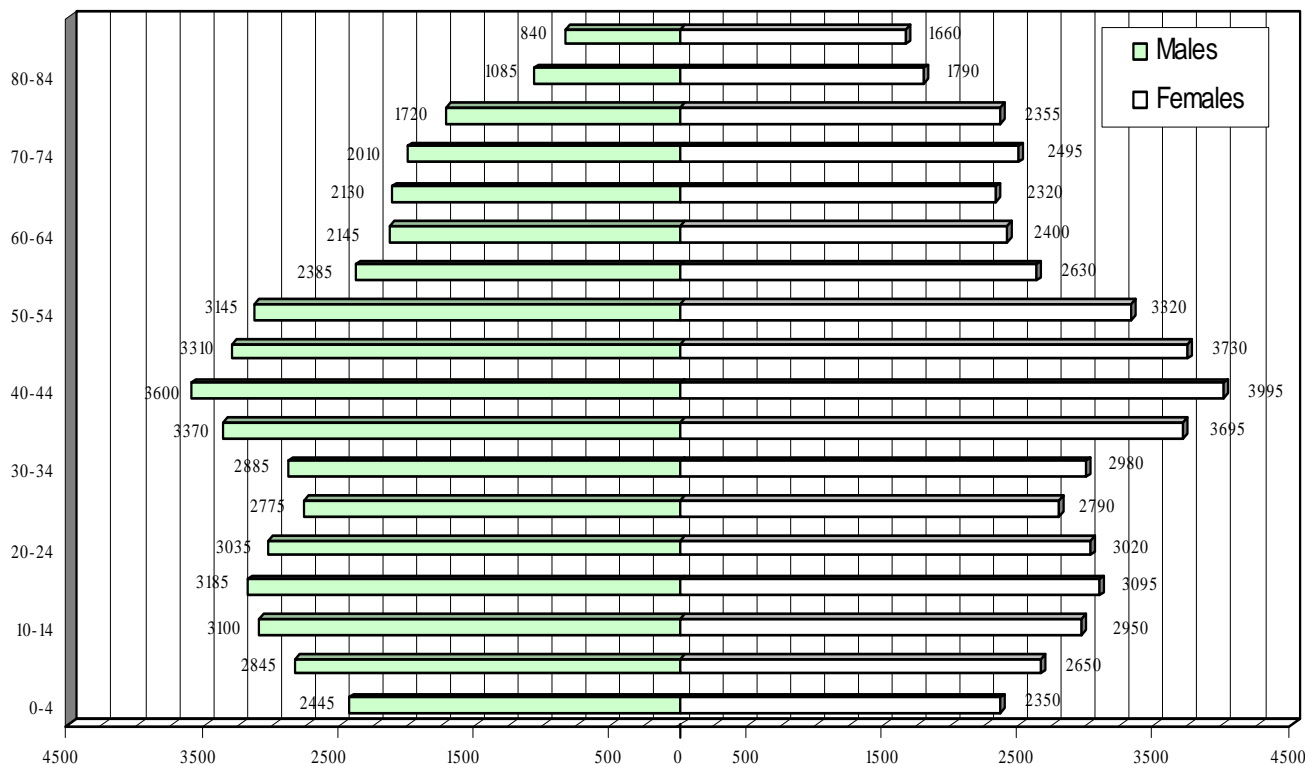
| Age           | 0-4  | 5-9  | 10-14 | 15-19 | 20-24 | 25-29 | 30-34 | 35-39 | 40-44 |
|---------------|------|------|-------|-------|-------|-------|-------|-------|-------|
| <b>Male</b>   | 2445 | 2845 | 3100  | 3185  | 3035  | 2775  | 2885  | 3370  | 3600  |
| <b>Female</b> | 2350 | 2650 | 2950  | 3095  | 3020  | 2790  | 2980  | 3695  | 3995  |
| <b>Total</b>  | 4795 | 5495 | 6050  | 6280  | 6055  | 5565  | 5865  | 7065  | 7595  |

| 45-49 | 50-54 | 55-59 | 60-64 | 65-69 | 70-74 | 75-79 | 80-84 | 85+  | Total |
|-------|-------|-------|-------|-------|-------|-------|-------|------|-------|
| 3310  | 3145  | 2385  | 2145  | 2130  | 2010  | 1720  | 1085  | 840  | 46010 |
| 3730  | 3320  | 2630  | 2400  | 2320  | 2495  | 2355  | 1790  | 1660 | 50225 |
| 7040  | 6465  | 5015  | 4545  | 4450  | 4505  | 4075  | 2875  | 2500 | 96235 |



*Note: These figures do not include the approximately 1,970 people on First Nations Reserve #7.*

**Figure 1: Total Population by Age and Gender, Kelowna, 2001**



# POPULATION BY AGE - City of Kelowna 1991-2001

| Age  | 0-14  | 15-24 | 25-34 | 35-44 | 45-54 | 55-64 | 65+   | Total |
|------|-------|-------|-------|-------|-------|-------|-------|-------|
| 1991 | 13725 | 9650  | 11115 | 10935 | 8220  | 7810  | 14490 | 75945 |
| 1996 | 16030 | 11465 | 12410 | 13305 | 10535 | 7800  | 16040 | 87585 |
| 2001 | 16340 | 12335 | 11430 | 14660 | 13505 | 9560  | 18405 | 96235 |

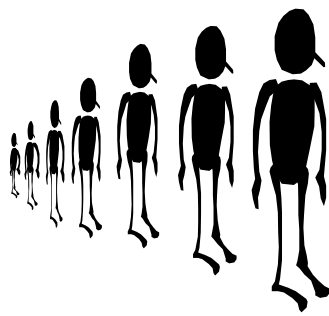
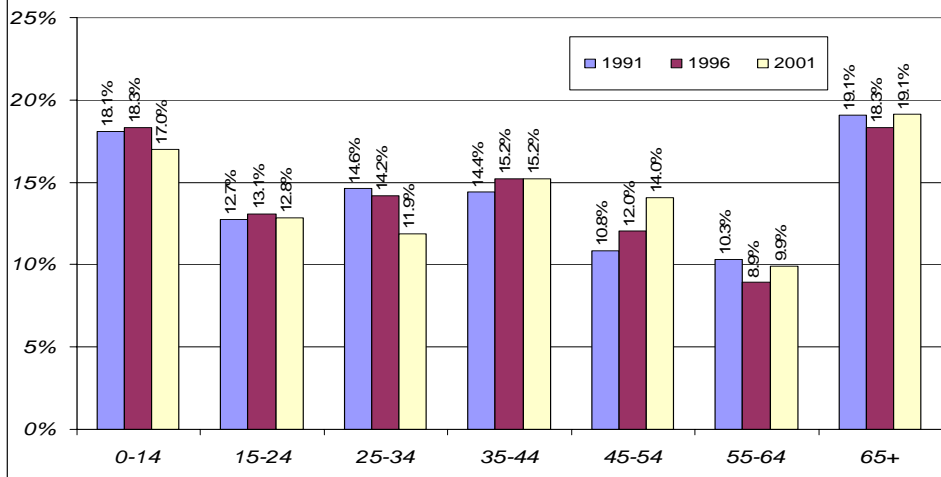


Figure 2: Population by Age, Kelowna 1991-2001

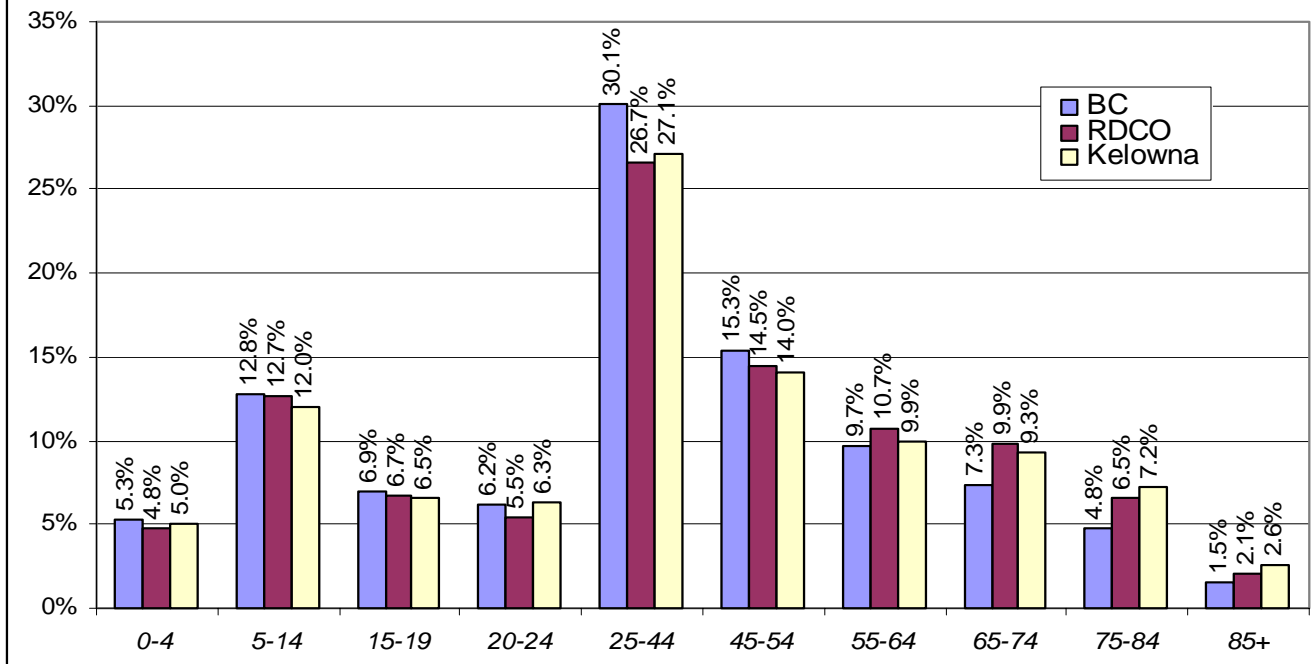


# POPULATION BY AGE - BC, RDCO, City of Kelowna 2001

Note: RDCO = Regional District of Central Okanagan and includes data from the City of Kelowna and First Nations Reserves.

| Age     | 0-4    | 5-14   | 15-19  | 20-24  | 25-44   | 45-54  | 55-64  | 65-74  | 75-84  | 85+   | Total   |
|---------|--------|--------|--------|--------|---------|--------|--------|--------|--------|-------|---------|
| BC      | 205650 | 500415 | 270275 | 244065 | 1174775 | 599705 | 379750 | 286710 | 186345 | 60030 | 3907720 |
| RDCO    | 7145   | 18750  | 9950   | 8075   | 39375   | 21385  | 15750  | 14580  | 9665   | 3055  | 147730  |
| Kelowna | 4795   | 11545  | 6280   | 6055   | 26090   | 13505  | 9560   | 8955   | 6950   | 2500  | 96235   |

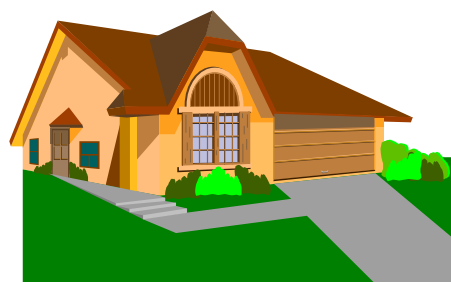
Figure 3: Population Distribution by Age Cohort BC, RDCO, City of Kelowna, 2001



Source: Statistics Canada 100% Data Set 2001

# HOUSING DISTRIBUTION - City of Kelowna 1991-2001

| Housing Type                             | 1991         | 1996         | 2001         |
|--|--------------|--------------|--------------|
| <b>Single/Two Family</b>                 | <b>20860</b> | <b>23990</b> | <b>26735</b> |
| Single-detached house                    | 18120        | 20305        | 22480        |
| Semi-detached house                      | 1695         | 1710         | 2365         |
| Apartment detached duplex*               | 975          | 1925         | 1825         |
| Other single attached homes              | 70           | 50           | 65           |
| <b>Multiple family</b>                   | <b>8700</b>  | <b>11710</b> | <b>12700</b> |
| Row House                                | 2175         | 2735         | 2800         |
| Apartment, five or more storeys          | 365          | 455          | 485          |
| Apartment, less than five storeys        | 6160         | 8520         | 9415         |
| <b>Movable</b>                           | <b>820</b>   | <b>740</b>   | <b>605</b>   |
| <b>Total Number of Private Dwellings</b> | <b>30375</b> | <b>36435</b> | <b>40045</b> |



\*Note: The term "apartment detached duplex" refers to a house with a secondary suite below. Each of the separate units (the house and the suite) are counted separately. (Source: Statistics Canada 20% Data Set 1991-1996. Statistics Canada 100% Data Set 2001).

## TENURE & RENTAL/OWNER MAJOR PAYMENTS-BC, RDCO, Kelowna 2001

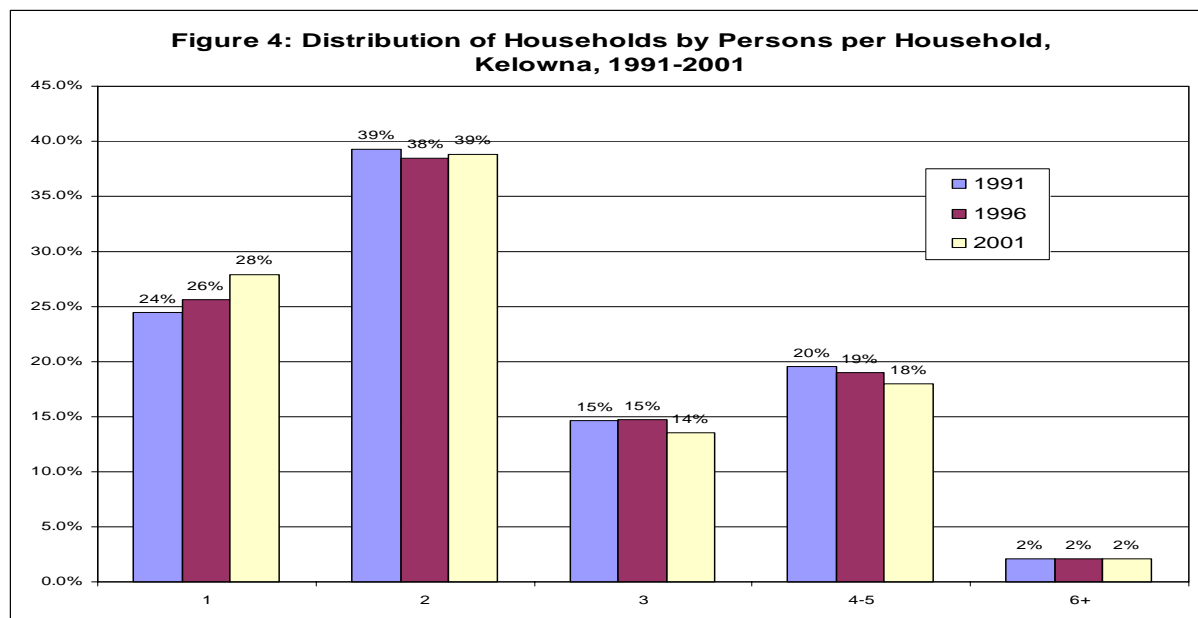
Note: RDCO = Regional District of Central Okanagan and includes data from the City of Kelowna and First Nations Reserves.

| Tenure                                | BC               |                  | RDCO          |               | Kelowna       |               |
|---------------------------------------|------------------|------------------|---------------|---------------|---------------|---------------|
|                                       | 1996             | 2001             | 1996          | 2001          | 1996          | 2001          |
| <b>NUMBER RENTED</b>                  | 491,540          | 1,017,490        | 14,775        | 15,900        | 12,130        | 12,995        |
| Average rent (one family HH)          | \$704            | n/a              | \$695         | n/a           | \$696         | n/a           |
| <b>NUMBER OWNED</b>                   | 928,990          | 512,365          | 38,835        | 43,980        | 24,310        | 27,050        |
| Average Owner payment (one family HH) | \$799            | n/a              | \$709         | n/a           | \$699         | n/a           |
| <b>OWNER / RENTER SPLIT</b>           | 65/35            | 67/33            | 72/28         | 73/27         | 67/33         | 68/32         |
| <b>TOTAL PRIVATE HOUSEHOLDS</b>       | <b>1,424,635</b> | <b>1,534,335</b> | <b>53,675</b> | <b>59,880</b> | <b>36,440</b> | <b>40,045</b> |

Source: Statistics Canada 20% Data Set 1996  
Source: Statistics Canada 100% Data Set 2001

## PERSON PER HOUSEHOLD - City of Kelowna 1991-2001

| Person/HH   | 1      | 2      | 3     | 4-5   | 6+  | Total Households | Avg. |
|-------------|--------|--------|-------|-------|-----|------------------|------|
| <b>1991</b> | 7,430  | 11,925 | 4,450 | 5,935 | 640 | 30,375           | 2.44 |
| <b>1996</b> | 9,355  | 14,005 | 5,365 | 6,935 | 770 | 36,435           | 2.42 |
| <b>2001</b> | 11,190 | 15,400 | 5,435 | 7,175 | 840 | 40,045           | 2.40 |



Source: Statistics Canada 100% Data Set 2001

# INCOME BY HOUSEHOLD SIZE- City of Kelowna 1991-2001

| Income Range         | Number of Total Households |               |               | Percent of Total Households |              |               |
|----------------------|----------------------------|---------------|---------------|-----------------------------|--------------|---------------|
|                      | 1per HH                    | >1 per HH     | All HH        | 1per HH                     | >1 per HH    | All HH        |
| Under \$10,000       | 1,400                      | 815           | 2,220         | 3.4%                        | 2.0%         | 5.4%          |
| \$ 10,000 - \$19,999 | 4,075                      | 1,905         | 5,960         | 9.9%                        | 4.6%         | 14.5%         |
| \$ 20,000 - \$29,999 | 2,055                      | 3,670         | 5,750         | 5.0%                        | 9.0%         | 14.0%         |
| \$ 30,000 - \$39,999 | 1,580                      | 3,970         | 5,510         | 3.9%                        | 9.7%         | 13.4%         |
| \$ 40,000 - \$49,999 | 1,025                      | 3,505         | 4,525         | 2.5%                        | 8.6%         | 11.0%         |
| \$ 50,000 - \$59,999 | 480                        | 3,465         | 3,980         | 1.2%                        | 8.5%         | 9.7%          |
| \$ 60,000 - \$69,999 | 310                        | 2,935         | 3,255         | 0.8%                        | 7.2%         | 7.9%          |
| \$ 70,000 - \$79,999 | 195                        | 2,270         | 2,450         | 0.5%                        | 5.5%         | 6.0%          |
| \$ 80,000 - \$89,999 | 105                        | 1,925         | 2,025         | 0.3%                        | 4.7%         | 4.9%          |
| \$ 90,000 - \$99,999 | 110                        | 1,220         | 1,295         | 0.3%                        | 3.0%         | 3.2%          |
| \$100,000 and over   | 95                         | 3,910         | 4,025         | 0.2%                        | 9.5%         | 9.8%          |
| <b>Total</b>         | <b>11,385</b>              | <b>29,615</b> | <b>40,975</b> | <b>27.8%</b>                | <b>72.3%</b> | <b>100.0%</b> |

| Income Range | Average Income |          | Median Income |          | Change in Median Income |
|--------------|----------------|----------|---------------|----------|-------------------------|
|              | 1996           | 2001     | 1996          | 2001     |                         |
| 1per HH      | \$24,335       | \$29,685 | \$18,373      | \$21,526 | \$3,153                 |
| >1 per HH    | \$52,870       | \$60,415 | \$45,126      | \$49,526 | \$4,400                 |
| All HH       | \$45,546       | \$52,696 | \$36,582      | \$37,561 | \$979                   |



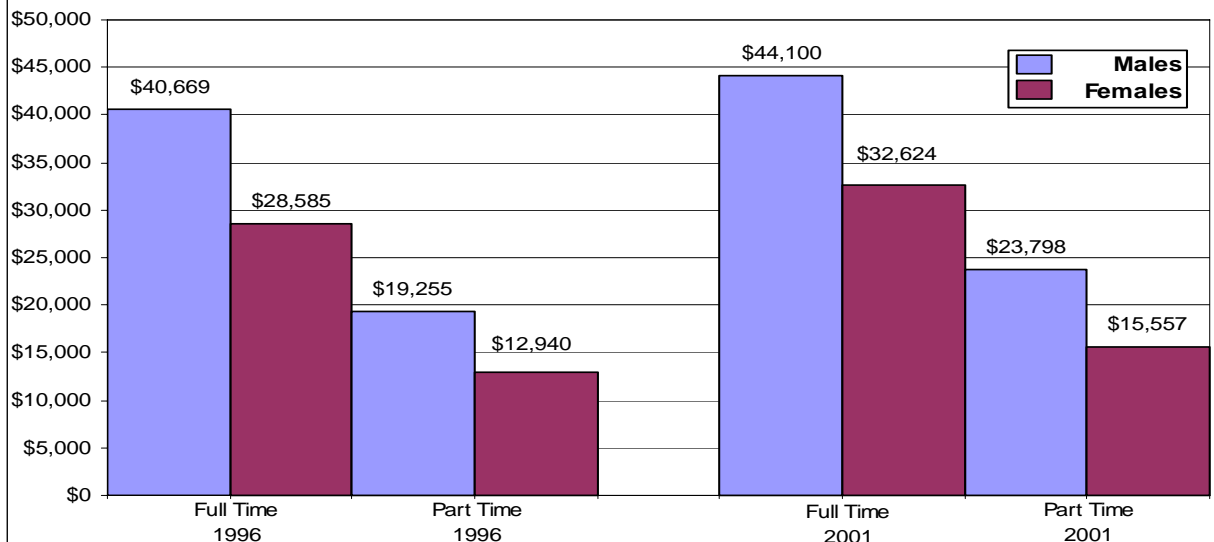
Source: Statistics Canada 20% Data Set 1996

Source: Statistics Canada 20% Data Set 2001

## AVERAGE INCOME BY GENDER & EMPLOYMENT STATUS - City of Kelowna 1991-2001

| Status                         | No. of People - 1996 | No. of People - 2001 | Average Inc. - 1996 | Average Inc. - 2001 |
|--------------------------------|----------------------|----------------------|---------------------|---------------------|
| <b>Full Time</b>               | 19,865               | 24,000               | \$35,772            | \$39,274            |
| <b>Male</b>                    | 11,785               | 13,825               | \$40,669            | \$44,100            |
| <b>Female</b>                  | 8,080                | 10,120               | \$28,585            | \$32,624            |
| <b>Part time</b>               | 24,890               | 26,145               | \$15,936            | \$19,403            |
| <b>Male</b>                    | 11,810               | 12,060               | \$19,255            | \$23,798            |
| <b>Female</b>                  | 13,080               | 14,065               | \$12,940            | \$15,557            |
| <b>Tot. w/ Employment Inc.</b> | 46,285               | 51,595               | \$24,279            | \$28,378            |
| <b>Male</b>                    | 24,315               | 26,515               | \$29,424            | \$34,035            |
| <b>Female</b>                  | 21,970               | 25,075               | \$18,586            | \$22,327            |

Figure 5: Average Income by Employment Status and Gender, Kelowna, 1996 & 2001



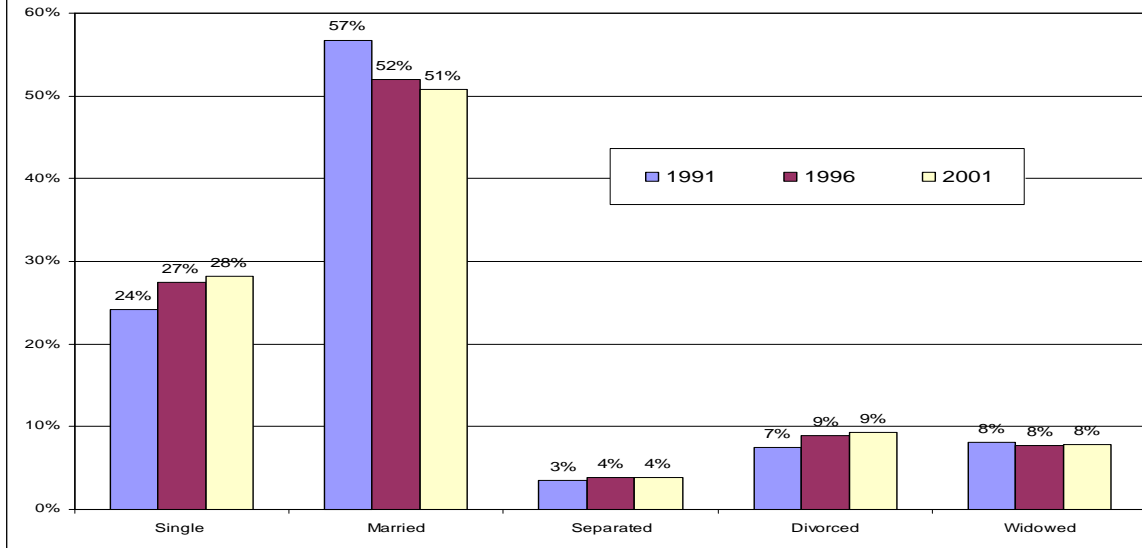
Source: Statistics Canada 20% Data Set 1996

Source: Statistics Canada 20% Data Set 2001

# POPULATION 15 YRS. + BY MARITAL STATUS - City of Kelowna, 1991-2001

| Status | Single | Married | Separated | Divorced | Widowed | Total Pop 15 years + |
|--------|--------|---------|-----------|----------|---------|----------------------|
| 1991   | 15,090 | 35,290  | 2,150     | 4,650    | 5,045   | 62,225               |
| 1996   | 20,090 | 38,025  | 2,855     | 6,520    | 5,655   | 73,145               |
| 2001   | 22,530 | 40,570  | 3,095     | 7,405    | 6,325   | 79,935               |

Figure 5: Distribution of Population 15 Years + by Marital Status, Kelowna, 1991-2001



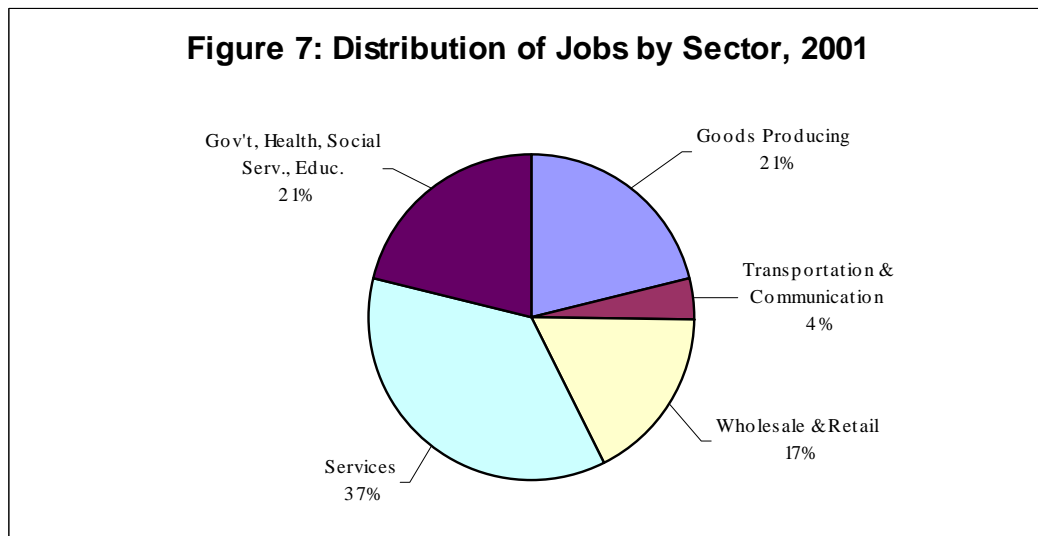
Source: Statistics Canada 20% Data Set 1996

Source: Statistics Canada 20% Data Set 2001

# DISTRIBUTION OF JOBS BY SECTOR - City of Kelowna, 1991-2001

| SECTOR                             | Total Labour Force |              |              | # of New Jobs     |                   |
|------------------------------------|--------------------|--------------|--------------|-------------------|-------------------|
|                                    | 1991               | 1996         | 2001         | Created 1991-1996 | Created 1996-2001 |
| Goods Producing                    | 9730               | 11075        | 10245        | 1345              | -830              |
| Transportation & Communication     | 2630               | 2565         | 2060         | -65               | -505              |
| Wholesale & Retail                 | 7055               | 8565         | 8335         | 1510              | -230              |
| Services                           | 10755              | 13290        | 17790        | 2535              | 4500              |
| Gov't, Health, Social Serv., Educ. | 6915               | 8805         | 10250        | 1890              | 1445              |
| <b>Total</b>                       | <b>37085</b>       | <b>44300</b> | <b>48680</b> | <b>7215</b>       | <b>4380</b>       |

Figure 7: Distribution of Jobs by Sector, 2001



Source: Statistics Canada 20% Data Set 1996

Source: Statistics Canada 20% Data Set 2001